

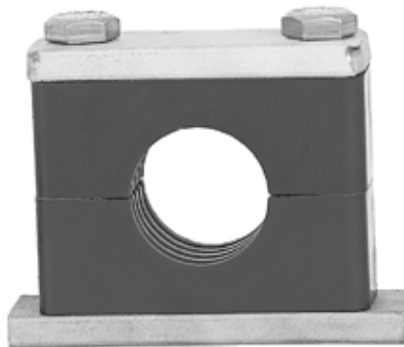


# IC Hydraulic Pipe Retaining Clamps

to DIN 3015



Double Clamp



Heavy Duty Standard Clamp



Light Duty Standard Clamp

## Material Options

Clamp bodies available in:

<b>AL</b>	Aluminium	up to 300°C
<b>PP</b>	Polypropylene	80°C
<b>PA</b>	Polyamide	120°C
<b>SA</b>	Santoprene	-40 to 150°C

Plates available in:

<b>W1</b>	Mild steel
<b>W5</b>	316 Stainless steel

Bolts available in:

<b>W1</b>	High tensile steel
<b>W5</b>	316 Stainless steel

## Notes

- 1) All dimensions in mm unless otherwise stated.
- 2) All technical data subject to change.
- 3) Further accessories available on request.

*Manufactured By:*

**International Clamps (Pty) Ltd.**

Tel: (+27) (11) 809-6500 Fax: (+27) (11) 887-7458

PO Box 581, Bergvlei 2012, South Africa

E-mail: [norma@icclamps.co.za](mailto:norma@icclamps.co.za)

Web Site: <http://www.icclamps.co.za>

# Standard & Heavy Series Clamp Bodies

**Table 1**

Group	Light Body Part AL-PP-PA-SA	Pipe OD		ID Inch	Heavy Body Part AL-PP-PA-SA	Group
		Metric	Inch			
0	0006	6				SPH TPH WPH
	0006.4		1/4"			
	0008	8				
	0009.5		3/8"			
	0010	10		1/8"		
	0012	12				
1	0106	6			1006	1H
	0106.4		1/4"		1006.4	
	0108	8			1008	
	0109.5		3/8"		1009.5	
	0110	10		1/8"	1010	
	0112	12			1012	
2	0212.7		1/2"		1012.7	1H
	0213.5	13.5		1/4"	1013.5	
	0214	14			1014	
	0215	15			1015	
	0216	16	5/8"		1016	
	0217.2	17.2		3/8"	1017.2	
	0218	18			1018	
3	0319		3/4"		2019	2H
	0320	20			2020	
	0321.3	21.3		1/2"	2021.3	
	0322	22	7/8"		2022	
	0325	25			2025	
4	0426.9	26.9		3/4"	2026.9	2H
	0428	28			2028	
	0430	30			2030	
5	-	30			3030	3H
	0532	32	1 1/4"		3032	
	0533.7	33.7		1"	3033.7	
	0535	35			3035	
	0538	38	1 1/2"		3038	
	0540	40			3040	
	0542	42		1 1/4"	3042	
6	-	44.5	1 3/4"		3044.5	3H
	-	38	1 1/2"		4038	
	-	42		1 1/4"	4042	
	0644.5		1 3/4"		4044.5	
	0648.3	48.3		1 1/2"	4048.3	
7	0650.8		2"		4050.8	4H
	-	55			4055	
	0757.2		2 1/4"		4057.2	
	-	60.3		2"	4060.3	
	-	63.5	2 1/2"		4063.5	
	-	65			4065	
	-	70			4070	
	0773	73	2 7/8"		-	
	0776.1	76.1	3"		-	

**ID** = Pipe inner diameter (Nominal Bore – NB)  
**OD** = Pipe outer diameter

Pipe OD		ID Inch	Heavy Body Part AL-PP-PA-SA	Group
Metric	Inch			
65			5065	5H
70			5070	
73	2 7/8"		5073	
75			5075	
	3"		5076.1	
80			5080	
	3 1/4"		5082.5	6H
88.9		3"	5088.9	
88.9		3"	6088.9	
100			6100	
102		3 1/2"	6102	
	4 1/4"		6108	
114		4"	6114	7H
	5"		6127	
	5 1/4"		6133	
	5 1/4"		7133	
140		5"	7140	7H
	6"		7152	
168		6"	7168	8H
168		6"	8168	
	8 1/2"		8216	8H
219		8"	8219	
219		8"	9219	9H
240			9240	
267			9267	
273		10"	9273	
318			9318	
324		12"	9324	
357			10357	10H
406		16"	10406	

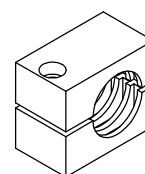
## Ordering Clamp Bodies

Order Code = Material + Body Part.

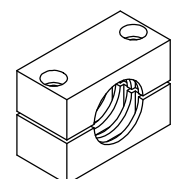
E.g. **PP 0006** Light Series, OD 6mm, Group 0 (single bolt), Material: PP (Polypropylene)

E.g. **AL 4070** Heavy Series, OD 70mm, Material: AL (Aluminium)

E.g. **PP 4070S** Heavy Series, OD 70mm, Material: PP (Aluminium), Smooth inside



Light Series  
Clamp Body  
(Group 0)



Light / Heavy Series  
Clamp Body  
(Groups 1 to 10)